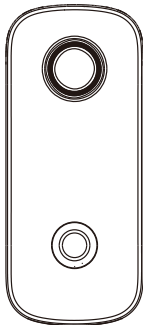


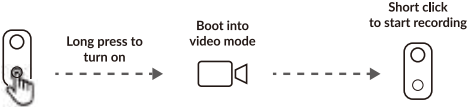
# Action Camera

## C100 SERIES

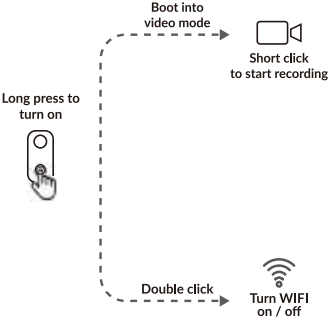


**Please read this manual carefully and store it for future reference**

# Operating instructions



## Functional operation



## Camera Accessories



WATERPROOF CASE



BACK CLIP



FRAME MOUNT



BASE MOUNT



SCREW



LANYARD



USB CABLE



CURVED  
AND FLAT MOUNT



2 X 3M ADHESIVE  
STICKER

**Weight: 42g**

**Size: 60mm x 20mm x 26mm**

**Note: The device is magnetic and can be attached to metal.**

Status	Functional description
Power on	The camera shakes once after long-pressing the OK button. The blue light is always on in standby mode.
Power off	The camera shakes twice after long-pressing the OK button. The blue light flashes twice before shutting down.
Video mode	The camera shakes once after pressing the OK button in the power-on state. Then the recording starts. The blue light flashes during the recording. Short-pressing the OK button while recording stops recording, and shakes once. While in the recording standby state, the blue light is always on.
Turn on WiFi	The WiFi is turned off by default when you turn the camera on. Press the OK button twice to turn it on. The green light flashes quickly when WiFi is not connected. When WiFi is connected, the green light is always on.
Turn off WiFi	Press OK button twice to turn off WiFi. The green light also shuts down.
Photo mode	The photo mode can only be used in the App. Switch to the photo mode from the App. The indicator light is always red. The red light flashes once per shot.
Time-lapse mode	Timelapse works inside the App. When the App switches to timelapse, the red indicatorlight is always on. The red and blue lights keep flashing when recording.
Low Power	When the battery is too low, the camera will shake three times. Then the red light will flash ten times quickly before shutting down the camera.
Full Storage Card	When the memory card is full, the camera will shake once. Then the blue light will flash ten times quickly before shutting down the camera.
Charging indicator	The charging indicator light can be found next to the card holder. When charging, the light is always on. After fully charged, it turns off.
No card or card error	The red light flashes quickly and the device will vibrate every two seconds. 10 minutes later the device will automatically shut down.
Car Mode	Car Mode works inside the App. The video will automatically start loop-recording when connected to the car charger. If you unplug the charger, the video will be automatically saved and camera turned off after 10s. Remember to switch modes from the app after using the Car Mode.
Webcam	Remove the camera's memory card and plug the camera to your computer's USB. The camera will automatically turn on, so will the blue light. Plug & Play, no need for drivers. (Note. If you have multiple cameras on your computer, you have to choose which one to use.)



Red light (Abnormal indicator)	Green light (Wifi indicator)	Blue light (Work indicator)	Charging indicator (Red)
Lights off	Lights off	Long light	Lights off
Lights off	Lights off	2 Flashes	Lights off
Lights off	Light is on when turning off / on WiFi	Flashing /Long light	Lights off
Lights off	Flashes rapidly / Long light	Flashing	Lights off
Lights off	Lights off	Lights off	Lights off
Long light / blinking once when taking photos	Light is on when turning off / on WiFi	Lights off	Lights off
Standby long light / time-lapse video red light and blue lights flash alternately	Light is on when turning off / on WiFi	Standby long light / time-lapse video red light and blue lights flash alternately	Lights off
Flashes rapidly	Light is on when turning off / on WiFi	Lights off	Lights off
Lights off	Light is on when turning off / on WiFi	Flashes quickly for 10 seconds	Lights off
Lights off	Lights off	Lights off	Long light/Fully off
Flashes rapidly	Lights off	Lights off	Lights off
Lights off	Lights off	Flashing	Lights off
Lights off	Lights off	Long light	Lights off

# Model Comparison

Model	C100	C100+
Chipset	Novatek 96672	Novatek 96675
Sensor	GC2053	GC4653
View Angle	Ultra wide angle	Ultra wide angle
Anti-shake	NO	YES
Video resolution	1080P(1920*1080)30FPS 720P(1280*720)30/60FPS VGA(640*480)30FPS	4K(3840*2160)30FPS 2K(2560*1440)30FPS 1080P(1920*1080)60/30FPS 720P(1280*720)120/60FPS
Photo Resolution	15M(5200*2928) 12M(4640*2608) 10M(4320*2432) 8M(3840*2160) 5M(3200*1808) 3M(2560*1440) 1M(1440*816)	15M(5200*2928) 12M(4640*2608) 10M(4320*2432) 8M(3840*2160) 5M(3200*1808) 3M(2560*1440) 1M(1440*816)
Video Mode	Normal Mode, Time-lapse Mode, Car Mode	Normal Mode, Time-lapse Mode, Car Mode, Vertical Screen mode
Photo Mode	Normal Mode, Burst Mode	Normal Mode, Burst Mode
Video Format	MP4	MP4
Photo Format	JPG	JPG
Charging Time	100minute	180minute

## **WI-FI Connect camera**



**IOS**



**Android**

**Scan above and download the App**

This product can be connected to smartphones (Android & IOS) and laptops. Please follow the instructions below:

1. Install the mobile phone software "SJCAM Zone" to your smartphone or laptop. Android devices can download the app from Google Play, iPhone users can download it from the App Store. Mainland China users can download the app from Application treasure.

2. Long press to turn on the camera.  
After that, press the button twice to  
turn on the WiFi.

3. Turn WiFi on in your mobile  
device, search and connect to WiFi  
"C100+\_XXXXX" / "C100\_XXXXX".  
Password: 12345678.

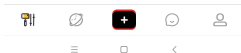
4. After succesfully connecting to  
the WiFi, open the SJCAM App, then  
click "connect camera" button.



album

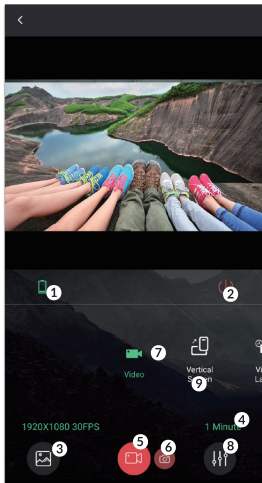
**SJCAM**

live streaming

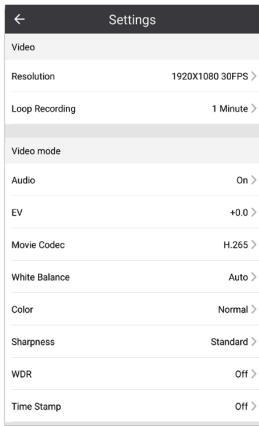


5. After successfully connecting to the SJCAM App, you can operate the camera according to instructions below:

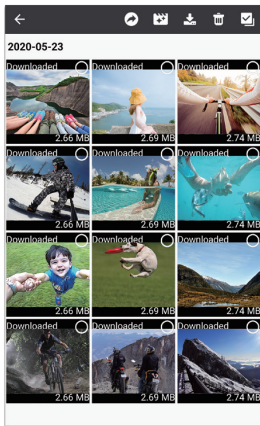
- ❶ Display camera battery
- ❷ Turn off camera
- ❸ Enter the media library
- ❹ Quick settings
- ❺ Start recording
- ❻ Switch to camera mode
- ❼ Slide to switch camera mode
- ❽ Enter camera settings
- ❾ Note: Only C100+ camera models have Vertical Screen mode



6. Camera Settings interface:  
The resolution and other recording settings can be set here.



7. Media library interface:  
Here you can watch, share, clip, download and delete pictures and videos.



## Different uses of the device



RUNNING



HOUSING



SELFIE



RIDING



DIVING



SKIING





**Importer:**

Verkkokauppa.com Oy  
Tyynenmerenkatu 11  
00220 Helsinki  
<https://asiakaspalvelu.verkkokauppa.com>

Made by Shenzhen ZhenCheng Technology Co. Ltd.  
3/F Building C, No.2 Road 1, Shangxue Industrial Area,  
Bantian, Longgang District, Shenzhen, China  
Telephone: +86-18118714563  
Official website: [sjcam.com](http://sjcam.com)  
Made in China